



Rockfish Valley Foundation

Enhancing the Quality of Life and Celebrating the People, Land, and History of the Rockfish Valley -www.rockfishvalley.org- contact@rockfishvalley.org



WINTER NEWSLETTER

As the year begins and we anticipate the joy of brighter days ahead, our thoughts turn to you, our amazing friends and supporters who have supported the mission and operation of the Rockfish Valley Foundation (RVF) since 2005. We are incredibly grateful and honored that you continue to choose to enjoy our facilities and support our operations. We hope you will enjoy our newsletter and choose to support our annual fund drive. Thank you.

THE PAST AND PRESENT

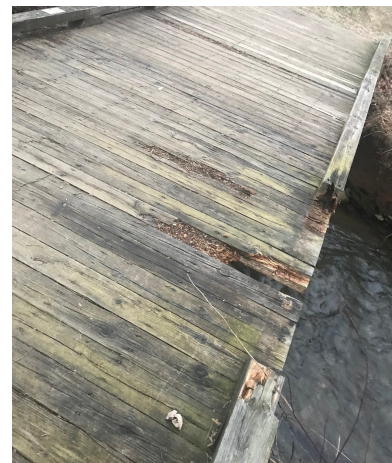
Thanks to everyone who has helped RVF get through the last nine months. The safe, socially-distanced outdoor interaction on the trails and in the park has been good for all.

In 2020, much happened within RVF. Visitation has increased significantly. We celebrated the 15th anniversary of the founding of RVF back in August and produced numerous videos, live videos, and features on our facebook page that celebrated the history of RVF, the Nelson Scenic Loop, and the Rockfish Valley. Please visit the RVF home page at rockfishvalley.org/blog to view a video of RVF's co-founder Betsy Agelasto speaking about the history of the Natural History Center and Earth Day, and more. Now that a vaccine is available, RVF plans to continue its strategic refresh working with facilitators focused on capacity and the future.



SCHEDULED IMPROVEMENTS IN 2021:

- Repair the large bridge over Reid's creek. RVF just received a \$500 corporate gift toward this expensive work. Please exercise caution when using the bridge until repairs are completed.
- VA. Department of Forestry S. Rockfish Stream buffer planting grant project is underway.
- Native Plant Walk phase II planting at Spruce Creek Park is scheduled for spring. Funding: Rivanna Garden Club, Emmanuel Episcopal Church and Piedmont Landscape Assoc. Photo: Cathy Clary, designer and manager

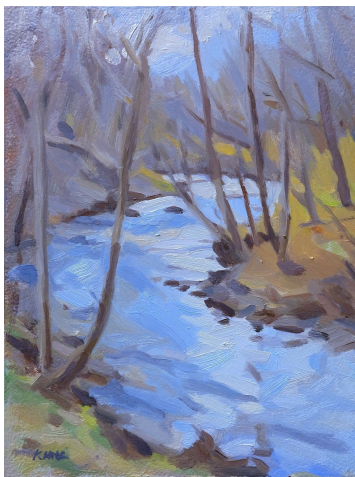


DATES TO REMEMBER

- **Old Wintergreen Day:** May 2, 2021, postponed from October, is the third annual celebration of community. Come stand by the campfires of Revolutionary War reenactment and exhibitors to learn about the early Wintergreen Village.
- **Chuck Bailey's Geology Zoom Meet:** On February 21, 3:00 p.m., Join William & Mary Geology Professor Chuck Bailey for a session on Nelson County's geological heritage. He'll discuss on-going and past research in Nelson, as well as new research discoveries by W&M geologists in Nelson. Topics will include the geology of the newly opened the Blue Ridge Tunnel, the Rockfish Valley Fault, Nelsonite, Soapstone, and Nelson County watersheds. There will be time for Q&A. Maps of the fault and tunnel will be discussed. You can register by sending an email to register@rockfishvalley.org.
- **Plein Air Paint Out:**



Chuck Bailey



Plans are underway with expectations for this celebratory event to be held in 2021. Date to be announced. Celebrate the future with landscape artists along the S. Rockfish Valley Trails, interacting with them as they paint *en plein air* and participate in the wet sale and party RVF will host afterward. In the past months there have been many artists set up along the trails. Here is one example by Zachary Kator of the S. Fork Rockfish River. RVF founders have been wanting to host a Plein Air Paint Out and subsequent sale for decades in the Rockfish Valley. Susan Viemeister and Stephen Doherty are planning to serve as co-chairs and local artist of note, Gray Dodson, is willing to serve as advisor. If you are interested as an artist please email contact@rockfishvalley.org.

MORE GEOLOGY NEWS

RVF reached out one year ago to form the committee but it has been treading water due to COVID-19. It was led by Kate Humphrey, and Chuck Bailey and his students presented materials. Now with COVID-19 restrictions hopefully being eliminated, the committee can meet and get to work. Kate remains a member of the committee, and has created a wonderful photo story highlighting erosion differences from the headwaters of the Rockfish River all the way down into the valley. Please visit rockfishvalley.org/blog/geology-trail to view it.

Our exemplary Geology Committee consists of the new chairman, Lawrence Tiezzi, joined by Christopher M. Bailey (W&M faculty), Callan Bentley (PVCC faculty), Michael Lachance, Chip Morgan, Ruth Deike, Kathryn J. Humphrey, Barbara Heyl, John & Deb Markham, and Betsy Agelasto.



Kate Humphrey

Become Part of the RVF Geology World: You can become a friend of Rockfish geology. Send an email with your contact information to contact@rockfishvalley.org to join our mailing list and you will be sure to get program announcements.

ONLINE WINTER ACTIVITIES

- **Friends of Rockfish Watershed:** Please visit the FORW website at forwatershed.org. FORW was founded by Peter Agelasto and Michael Lachance. In 2021 we expect to make use of the work and mission of Friends of Rockfish Watershed. This research and studies done in Nelson by this organization which is now maintained by RVF are incredible. Six drawers of files at RVF organized by volunteer Diane Easley. They are an asset of RVF. Open the site and learn about the Rockfish and Tye rivers and Chesapeake Bay Watershed.
- **Rockfish Rangers:** New Rockfish Rangers trail brochure is now at kiosks and on our website, at rockfishvalley.org/blog/rockfish-rangers. Rockfish Rangers discovery in Spruce Creek Park will be joined with its partner in the Natural History Center in April. Complete the ranger project on the web.
- **Trails and Park Brochure Updated:** RVF has updated its trail and park brochure. You can view and download the full updated trail brochure at rockfishvalley.org/blog/rockfish-valley-trails.



Trailheads and Facilities

The Rockfish Valley Foundation, a non profit organization, was founded in 2005. The Foundation receives no federal, state, and local funding. It is run by volunteers and funded by donations.

Four trailheads with parking are located at Spruce Creek Park, the Camille Memorial, the Natural History Center, and Glenhome Loop. There are portable toilets at Spruce Creek Park and the Camille Memorial.

Hurricane Camille

On August 19-20, 1969, nearly 25 inches of rain fell in less than 6 hours and 125 persons perished. Ed Ewing and his wife perished when the river swept away their farmhouse, which once stood where the Camille Trailhead parking is today. The river was worked on by the Corps of Army Engineers in 1971 and again by VDOT starting in 2005.

Mountain Views

The big south-west view is Three Ridge Mountain, although it has more than 3 ridges! Directly west is Wintergreen Resort on Black Rock Mountain, with Devil's Rock further to the west. To the north-east are mountains extending along the Blue Ridge and into Charlottesville. To the south is Bear's Gap at the top of Horsehoe Mountain.

South Rockfish Valley

Much history and culture surrounds you. The area is part of the South Rockfish Valley Rural Historic District, and there are many registered historic farms and landmarks. Several roads are registered as scenic byways.

Spruce Creek Park & Children's Nature Trail

Spruce Creek Park contains a children's nature play area with a mud kitchen, swings, walking board, etc., as well as the Native Plant Walk, Bocce court, gazebo and picnic tables. It is surrounded by a short Children's Trail with information about water, rocks, plants, and animals. Nearby is the Natural History Center showcasing Nelson County's geology, watershed, native birds, plants and animals, and cultural history.



Kids In Parks Track Trail

The one mile loop begins at the Camille trailhead. Brochures are located there to create an exciting outdoor experience.

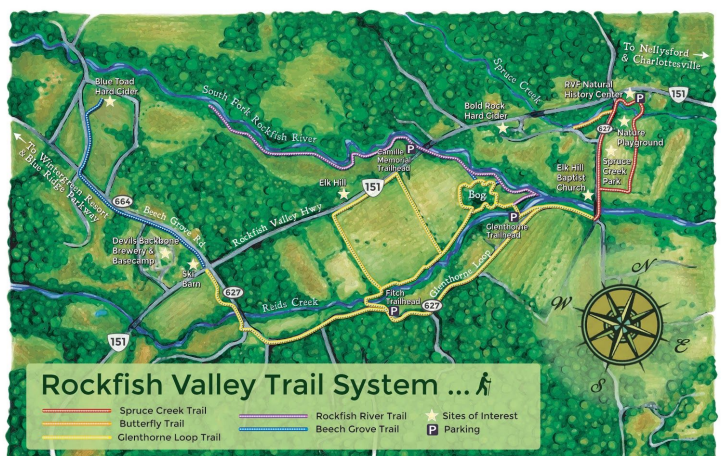


The Rockfish Valley Foundation
PO Box 235, Nellysford, VA 22958
Natural History Center
1368 Rockfish Valley Highway
434-361-0271
www.rockfishvalley.org
contact@rockfishvalley.org

Rockfish Valley Trails & Spruce Creek Park Nellysford, Virginia



TO DONATE: Text RVDONATE to 44321



CAPACITY RELATES TO VOLUNTEERS AND DONATIONS

Volunteer Tasks: The volunteer committee, co-chaired by Bruce Slater and Bill Plyler, has several tasks to publicize - view them by visiting rockfishvalley.org/blog/volunteer. Volunteers are the essential element for RVF to continue to provide our wonderful services to the public. We anticipate that the COVID-19 vaccine will allow all to resume more group activities to include reopening the Natural History Center. Hosts for the NHC are being recruited. If you are interested send an email to volunteer@rockfishvalley.org. The various committees of RVF define their needs and then the Volunteer Committee recruits, vets, helps train, and hopefully rewards the volunteers.

THE FUTURE OF RVF

In October, the founders, Betsy and Peter Agelasto, began a serious transition to reduce their leadership roles, degree of responsibility and performance of other tasks. RVF is focused now on its future sustainability and its mission. RVF provides public facilities in a county which has few: the Rockfish Valley Trails, Spruce Creek Park, the Natural History Center, the South Rockfish Valley Historic District, and the Nelson Scenic Loop to name a few. A related story by the Daily Progress may be accessed on January 1st by visiting [tinyurl.com/y7359p5e](https://www.dailyprogress.com/story/news/2021/01/01/rockfish-valley-foundation-leadership-transition/7359p5e). This underscores the important transition work to which the founders are committed. RVF provides public resources with its park and trails. Now RVF begins a public search and interview process for the additional people to undertake leadership roles, assume responsibilities and perform other tasks.



HOW TO DONATE

RVF relies entirely on the generosity of people like you. Please consider a donation now. Help us achieve our goal of 300 donors - we are currently at less than 200. Thank you!

- **How to Donate:** Please visit rockfishvalley.org/blog/donations to learn how to donate to RVF and support the 2021 operations budget. We are ½ way to our goal in dollars and donors.
- **Schedule Monthly Paypal Donations:** Visit our website through the link above to join those who have scheduled monthly PayPal donations to RVF.

RVF ELEVATOR SPEECH

The Rockfish Valley Foundation (RVF) is based in Nelson County near Nellysford. It's mission is to enrich the lives of the community and visitors with a rural-tourism experience. RVF aims to foster appreciation and preservation of its natural, historical, ecological, and agricultural resources, and to encourage recreation and a healthy lifestyle in the Rockfish Valley.

The facilities at RVF include trails along the Rockfish River, the unique Spruce Creek Park off Glenthorne Loop at 1368 Rockfish Valley Highway, Nellysford with its Children's Nature Trail, Natural History Center and Museum, the Native Plant Walk, and plenty of picnic tables. See rockfishvalley.org for more information.

From all of us at RVF, we wish you a safe and joyous 2021.

Peter A. Agelasto III, Chairman

